

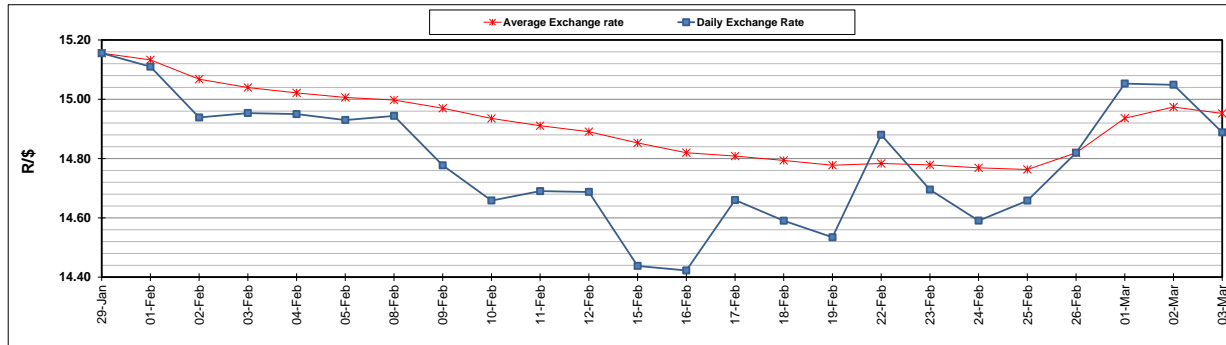
	PETROL 95 ULP	PETROL 93 ULP & LRP	DIESEL 0.05%	DIESEL 0.005%	ILL. PAR.
GAUTENG PUMP PRICE (SA c/l) AS FROM 03/03/2021	1,632.000	1,615.000	-	-	-
WHOLESALE PRICE (SA c/l) AS FROM 03/03/2021	-	-	1,412.420	1,416.820	845.688
SINGLE NATIONAL MAXIMUM RETAIL PRICE	-	-	-	-	1,071.000
BASIC FUEL PRICE - 03/03/2021 (SA c/l)	698.154	688.700	671.733	675.065	650.398
PRESS RELEASE CONTRIBUTION TO BFP 03/03/2021 - 03/03/2021 (SA c/l)	665.170	658.170	653.630	658.030	633.128
UNIT OVER/(UNDER) RECOVERY - 03/03/2021 (SA c/l)	(32.984)	(30.530)	(18.103)	(17.035)	(17.270)
AVERAGE BASIC FUEL PRICE 26/02/2021 - 03/03/2021	708.080	698.462	681.629	685.037	659.905
AVERAGE UNIT OVER/(UNDER) RECOVERY 26/02/2021 - 03/03/2021	(91.660)	(89.042)	(68.499)	(69.007)	(62.027)

ANALYSIS MOVEMENT OF AVERAGE OVER/(UNDER) RECOVERY

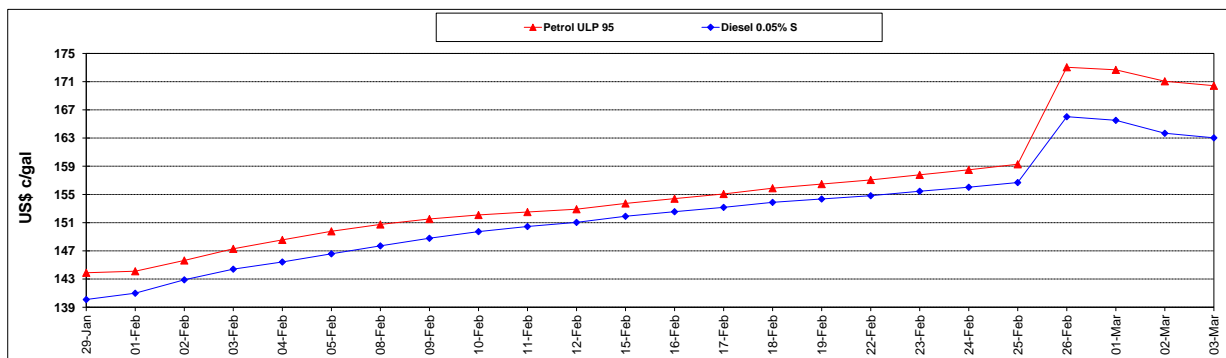
	PETROL 95	PETROL 93	DIESEL 0.05%	DIESEL 0.005%	ILL. PAR.
- MOVEMENT IN INTERNATIONAL PRODUCT PRICES	(82.696)	(80.199)	(59.869)	(60.334)	(53.672)
- MOVEMENT IN EXCHANGE RATE	(8.964)	(8.843)	(8.630)	(8.673)	(8.355)
AVERAGE UNIT OVER/(UNDER) RECOVERY 26/02/2021 - 03/03/2021	(91.660)	(89.042)	(68.499)	(69.007)	(62.027)

R/\$ EXCHANGE RATE - (R/\$14.8883 - 03/03/2021)

EXCHANGE RATE USED IN BASIC FUEL PRICE



INTERNATIONAL PRODUCT PRICES OF BASKET USED IN BASIC FUEL PRICE



BASIC FUEL PRICE IN SA CENTS PER LITRE

